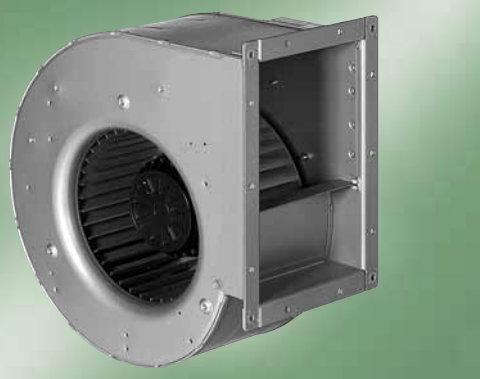


AC centrifugal blowers

single inlet, Ø 250



- **Material:** scroll housing and impeller made of galvanised sheet steel
- **Type of protection:** IP 54 (please note drilled condensate discharges)
- **Insulation class:** "F"
- **Directive:** complying with EN 60034-1
- **Motor protection:** thermal overload protector brought out
- **Approvals:** CE

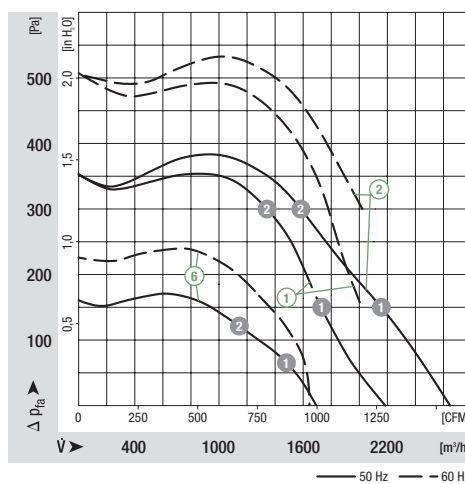
ebm-papst • Muldingen

Nominal data		Characteristic	Voltage	Frequency	Speed/rpm ⁽¹⁾	Max. power input ⁽¹⁾	Max. current draw ⁽¹⁾	Capacitor	Min. back pressure	Perm. amb. temp.	Mass	Dimensions				
Type	Motor	VAC	Hz	min ⁻¹	W	A	µF/VDB	Pa	°C	kg	Type	C	D	E	S	U
G4D 250-DC10 -03 ⁽²⁾	M4D094-HA	①	400 Y	50	1350	590	1,17	---	0	80	G4D 250-DC10 -03	218	190	167	90	198
			400 Y	60	1560	710	1,26	---	150	60						
G4D 250-EC10 -03 ⁽²⁾⁽³⁾	M4D094-HA	②	400 Y	50	1280	800	1,46	---	0	50	G4D 250-EC10 -03	313	285	262	180	293
			400 Y	60	1560	700	1,24	---	300	55						
G4E 250-DA09 -03	M4E 094-HA	③	230	50	1310	570	2,48	10 / 450	0	70	G4E 250-DA09 -03	218	190	167	90	198
			230	60	1470	690	3,05	10 / 450	100	55						
G4E 250-EA09 -03 ⁽³⁾	M4E 094-HA	④	230	50	1150	760	3,80	10 / 450	0	45	G4E 250-EA09 -03	313	285	262	180	293
			230	60	1400	730	3,30	10 / 450	220	55						
G6E 250-DK05 -03	M6E 094-FA	⑤	230	50	850	220	1,00	6,0 / 450	0	80	G6E 250-DK05 -03	218	190	167	90	198
			230	60	900	295	1,30	6,0 / 500	0	80						
G6E 250-EK05 -03 ⁽³⁾	M6E 094-FA	⑥	230	50	780	255	1,15	6,0 / 450	0	80	G6E 250-EK05 -03	313	285	262	180	293
			230	60	760	305	1,35	6,0 / 500	0	70						

subject to alterations ⁽¹⁾ in operating point with maximum load ⁽²⁾ 400 VAC Δ/Y for two speed steps available on request ⁽³⁾ data collected via exhaust duct of 1 m length serving as diffuser

	n [min ⁻¹]	P ₁ [W]	I [A]	Lp _A [dB(A)]
① ①	1390	444	0,99	72
① ②	1430	312	0,87	70
② ①	1330	654	1,13	76
② ②	1410	386	0,94	71
⑥ ①	855	215	0,96	65
⑥ ②	910	173	0,79	62

Characteristics



	n [min ⁻¹]	P ₁ [W]	I [A]	Lp _A [dB(A)]
③ ①	1370	448	2,25	70
③ ②	1420	325	1,85	68
④ ①	1310	560	2,73	73
④ ②	1390	395	2,05	69
⑤ ①	900	180	0,82	63
⑤ ②	930	156	0,74	61

Characteristics

