

# AC centrifugal blower

Dual inlet, forward curved



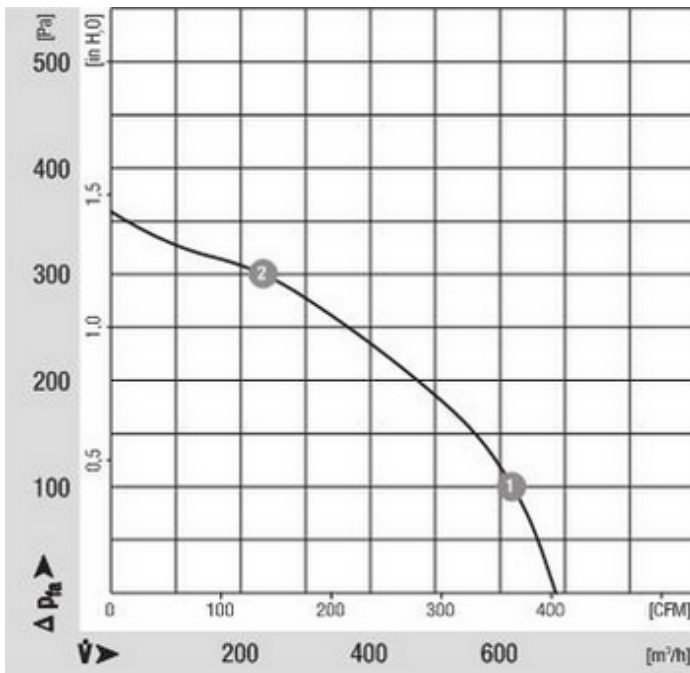
- **General description:** Without flange
- **Impeller material:** Sendzimir galvanized sheet steel
- **Housing material:** Sendzimir galvanized sheet steel

Nominal data		Voltage	Frequency	Air flow	Speed	Power consumption	Current draw	Capacitor capacity	Sound pressure level	Operative range 50Hz	Ambient temperature 50Hz	Weight
Type	Motor	1 - VAC	Hz	m <sup>3</sup> /h	1/min	W	A	uF/V	dB(A)	Pa	°C	kg
D2E133AM4701	M2E068DF	230	50	685	1500	190	0.84	3.0 / 450	59	0 .. 360	-25 .. 45	3.5

Subject to modification

Characteristic: Pressure over air flow at 50Hz

n	P <sub>1</sub>	I	LpA	ntL
[1/min]	[W]	[A]	[dBA]	[%]

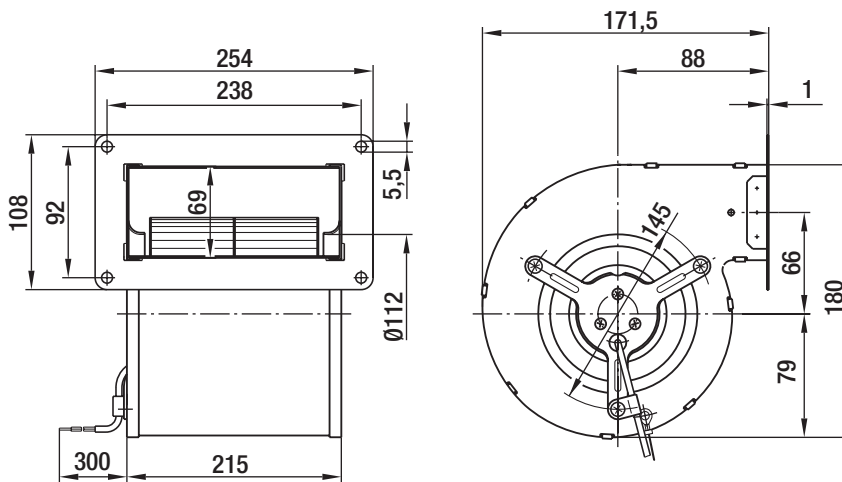


1	1885	180	0,8	--	--
2	2640	130	0,58	--	--

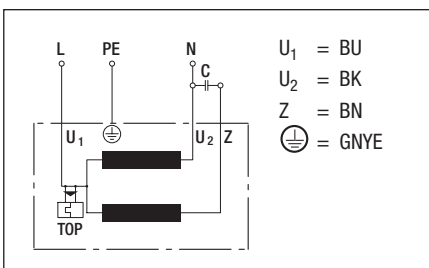
# AC centrifugal blower

Dual inlet, forward curved

## Specific drawing



## Connection illustration



## Technical description

- **General description:** Without flange
- **Housing material:** Sendzimir galvanized sheet steel
- **Bearings:** Maintenance-free ball bearings
- **Electrical connection:** Brass lead tips
- **Guideline:** EN 60335-2-31, CE
- **Insulation class:** "B"
- **System of protection:** IP 44
- **Approvals:** CCC, GOST
- **Impeller material:** Sendzimir galvanized sheet steel
- **Design:** SAL motor mounted on one side using brackets
- **Direction of rotation:** Clockwise, seen on rotor
- **Cable layout:** Variable
- **Operating mode:** Continuous operation (S1)
- **Protection class:** I
- **Motor protection:** TOP wired internally

## Contact

ebm-papst Mulfingen GmbH & Co. KG

Bachmühle 2

D-74673 Mulfingen

Phone +49 (0) 79 38 / 81-0

Fax +49 (0) 79 38 / 81-110

info1@de.ebmpapst.com

www.ebmpapst.com