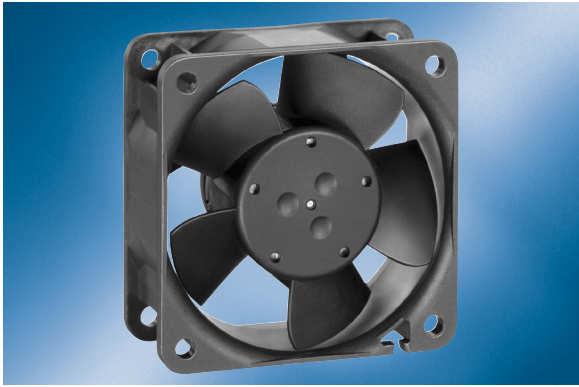


DC axial fan

Series 600 N 60 x 60 x 25



- **General description:** DC fan with electronically commutated external rotor motor. Commutation electronics completely integrated.

- **Impeller material:** Fiberglass-reinforced PA plastic

- **Housing material:** Fiberglass-reinforced PBTP plastic

Nominal data		Voltage	Voltage range VDC	Air flow	Speed	Power consumption	Sound level	Sound pressure level	Ambient temperature	L10 service life at 40 °C	L10 service life at max. temp.	Weight
Type	Motor	VDC	VDC	m³/h	1/min	W	Bel	dB(A)	°C	h	h	kg
614 NH	--	24	18 - 26	46	5600	2.1	5.3	37	-20 .. 70	70000	35000	0.066
Subject to modification												

Characteristic: Pressure over air flow

